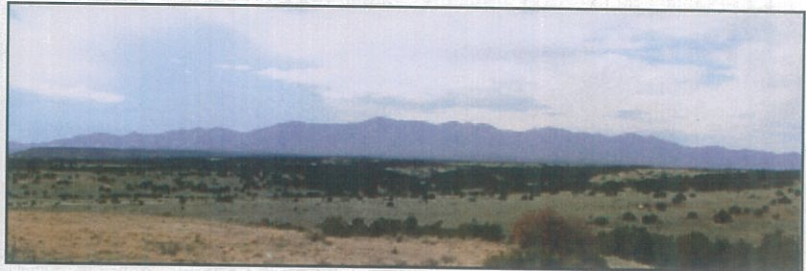
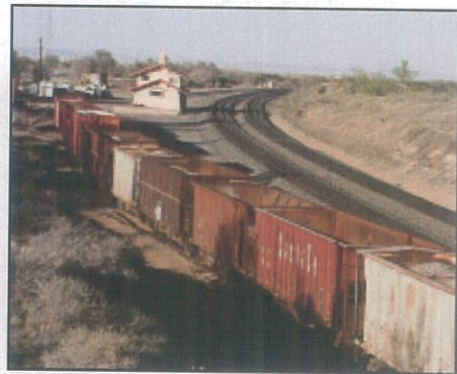


August 2004

Town of Mountainair
Comprehensive Land Use Plan



Prepared by:
Mid-Region
Council of Governments

Mountainair Town Council

Lorraine Wardell, Mayor
Juanita Carrillo, Councilor
Gayle Jones, Councilor
Frank Lucero, Councilor
John Romero, Councilor

Mountainair Comprehensive Plan Steering Committee

Samantha Harman
Rahla Carney
Hank Fountain
Joan Page
Severo Sisneros
Diane Bradshaw
James McDermot
Jessie Rogers

Mid-Region Council of Governments of New Mexico

Lawrence Rael, Executive Director

Contributing Staff:

Joseph Quintana, AICP, Regional Planning Manager
Randall Falkner, Regional Planner
Jan Borchardt, AICP, Regional Planner
Carol Earp, GIS Analyst/Cartographer
Dave Abrams, Demographer

COMPREHENSIVE LAND USE PLAN
for the
TOWN OF MOUNTAINAIR, NEW MEXICO

Adopted by the Town Council
July 13, 2004

This document was prepared by the Mid-Region Council of Governments staff through the New Mexico Community Development Block Grant Program, and funded in part by the Local Government Division of the New Mexico Department of Finance and Administration in cooperation with the U.S. Department of Housing and Urban Development.

MID-REGION COUNCIL OF GOVERNMENTS OF NEW MEXICO
317 COMMERCIAL NE, SUITE 104, ALBUQUERQUE, NEW MEXICO 87102

TABLE OF CONTENTS

<u>PART</u>		<u>PAGE</u>
I	INTRODUCTION AND PURPOSE	1
II	COMMUNITY PROFILE	2
	Regional Setting	2
	Character of Development	4
	History of the Community	5
	Population and Housing	8
	Population Characteristics	9
	Housing Characteristics	12
	Local Economy	14
	Economic Sectors of the Community	14
	Labor Force, Employment, and Earnings	15
	Municipal Revenues and Expenditures	19
	Transportation and Circulation Systems	21
	Community Facilities and Services	25
	Local Government Operations	25
	Water Supply and Wastewater Disposal	25
	Stormwater Management	26
	Parks, Recreation, and Open Space	26
	Police, Fire, and Ambulance	29
	Solid Waste Disposal	29
	Street Maintenance	29
	Health Care	30
	Finance, Communications, and Energy	30
III	TRENDS AND PROJECTIONS	32
	Forecast of Population, Housing, and Employment for 2025	32
	Population	32
	Housing	35
	Employment	37
	Current and Future Land Use	38
	Residential Development	41
	Commercial and Industrial Development	43
	Parks, Open Space and Agriculture Land Use	45
	Future Transportation Network	45
	Street Network	45
	Proposed Transportation Improvements	45